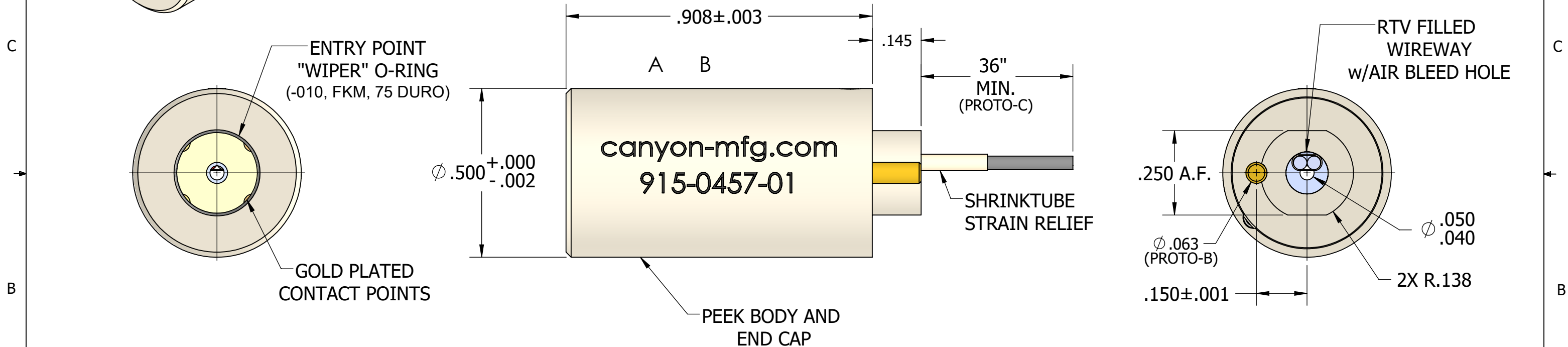
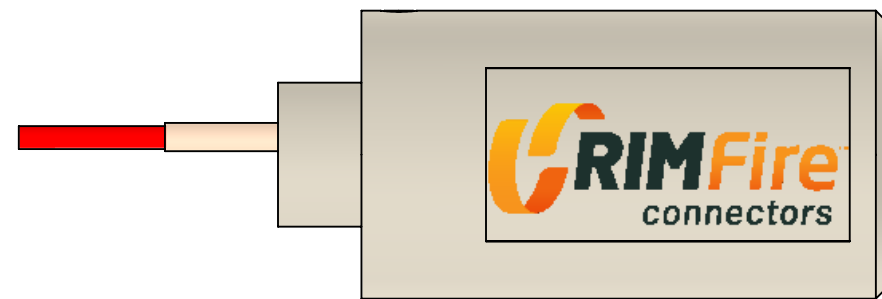
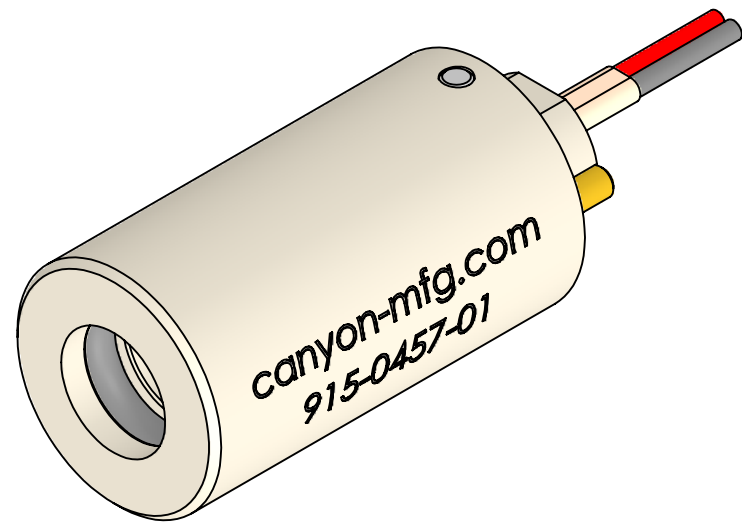


REVISIONS			
REV.	DESCRIPTION	DATE	APPROVED
PROTO-A	INITIAL RELEASE	3/16/2021	SWright
(PROTO-B)	CHANGED ANTI-ROTATION FEATURE	4/19/2021	SWright
(PROTO-C)	CHANGED WIRE LENGTH, FROM 24"	5/6/2021	SWright
A	INITIAL RELEASE TO PRODUCTION	5/17/2021	SWright



NOTES:

- TEMPERATURE RATING: 392°F (200°C)
CURRENT: 2 AMPS MAX
INSULATION RESISTANCE = 500M W @ 500VDC
- CONTACTS ARE GOLD PLATED PER CANYON SPEC:
QP-ENG-7.4-001 CURRENT REVISION.
- WIRE LENGTH TO BE 24 MIN. OR AS DETERMINED BY CUSTOMER.
- PART NUMBER TO ORDER: 915-0457-01, CURRENT REVISION.

WIRING DIAGRAM			
CONTACT	COLOR	WIRE SIZE	LENGTH
A	BLACK	24 AWG, 600v, 200°C	36"
B	RED	24 AWG, 600v, 200°C	36"

(PROTO-C)



TITLE:
ASSEMBLY, 2-CONDUCTOR FEMALE
MINI ROTATABLE .500" OD
915-0457-01, REV A , SALES